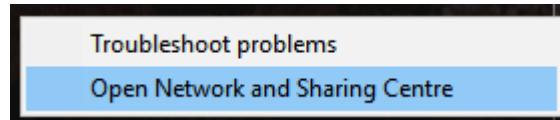


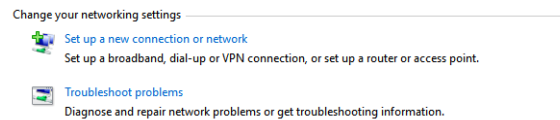
Windows 8 & 10

Ühendumine eduroam'i

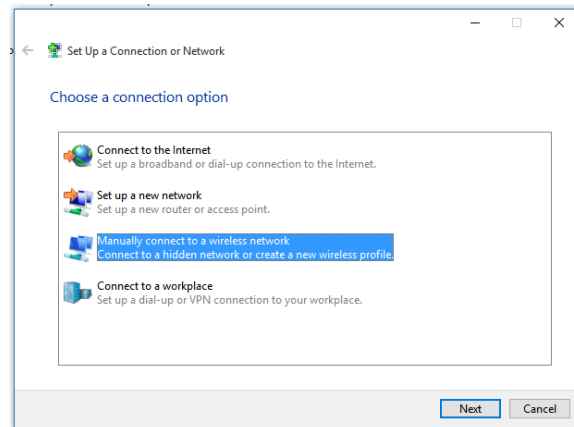
1. Ava **Network and Sharing Center**. Selleks tee kellaja juures oleval võrguühenduse ikoonil hiirega vasak klõps ja tee vastav valik.



2. Avanedud aknas vajuta valikule **Set up a new connection or network**.



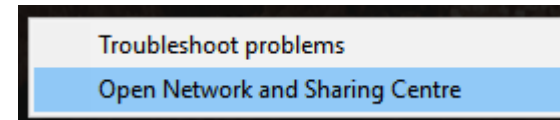
3. Avanedud aknas vali loetelust **Manually connect to a wireless network** ja vajuta **Next**.



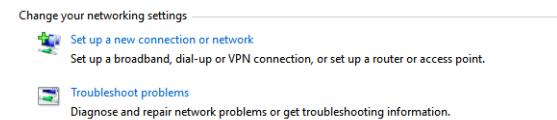
4. Järgmises aknas sisesta võrgu nimeks **eduroam** ja **Security type**'ks määra rippmenüüst **WPA-2 Enterprise**. Peale seda vajuta **Next**.

Connecting to eduroam

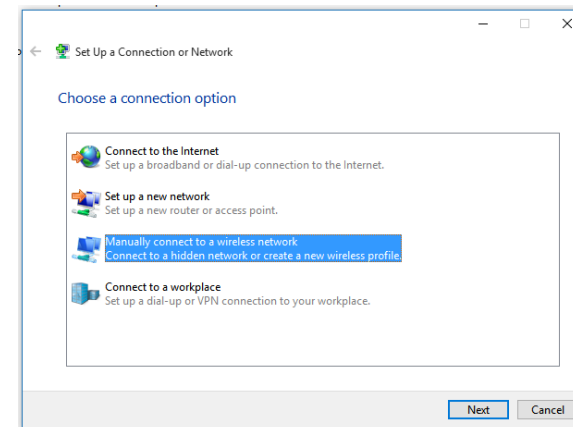
1. Open the **Network and Sharing Center**. Right click on the network connection icon and choose the **Open Network and Sharing Center** from the context menu.



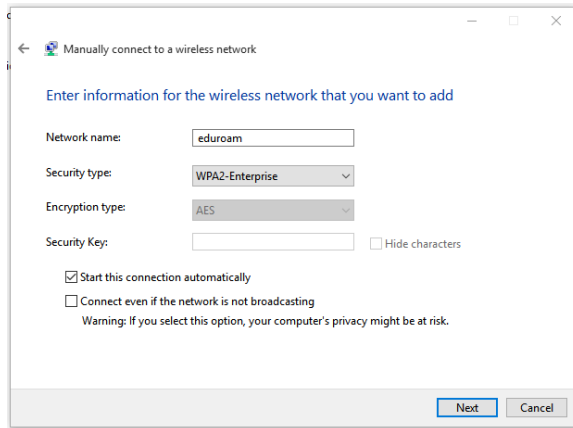
2. Click on **Set up a new connection or network**.



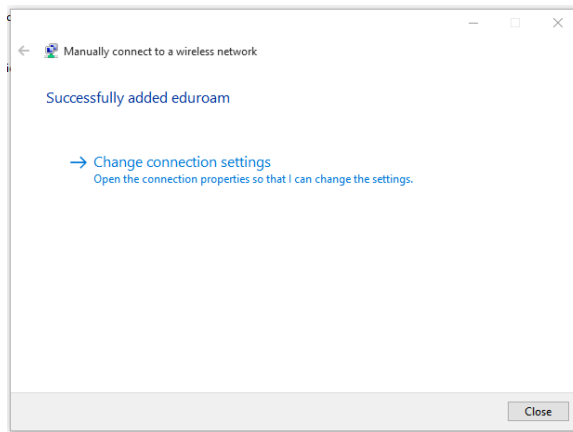
3. Choose **Manually connect to a wireless network** from the list and click **Next**.



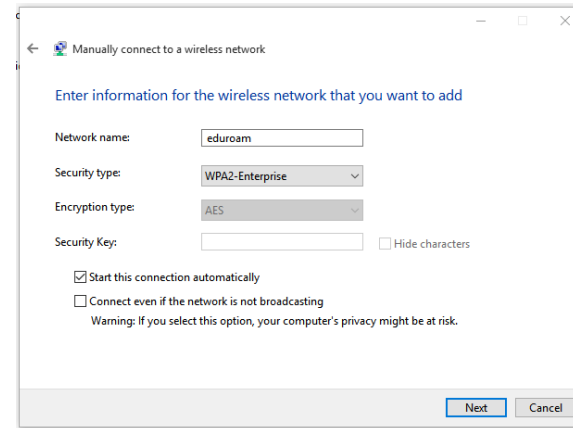
4. Enter **eduroam** as the network name and set the **Security type** to **WPA-2 Enterprise**. Click **Next**.



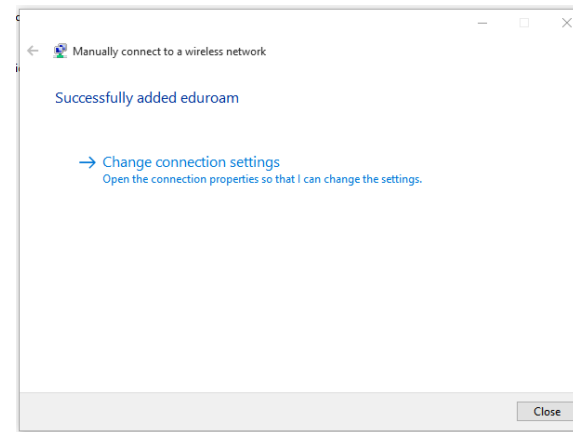
5. Vajuta valikul **Change connection settings**.



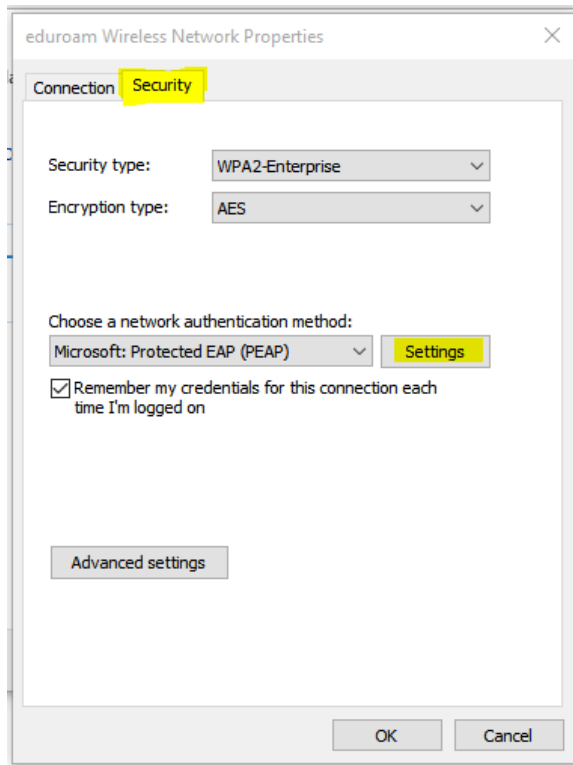
6. Avanevad aknas vali vaheleht **Security**. Veendu, et **Choose a network authentication method** rippmenüüs oleks valik **Microsoft: Protected EAP (PEAP)** ja vajuta nupule **Settings**.



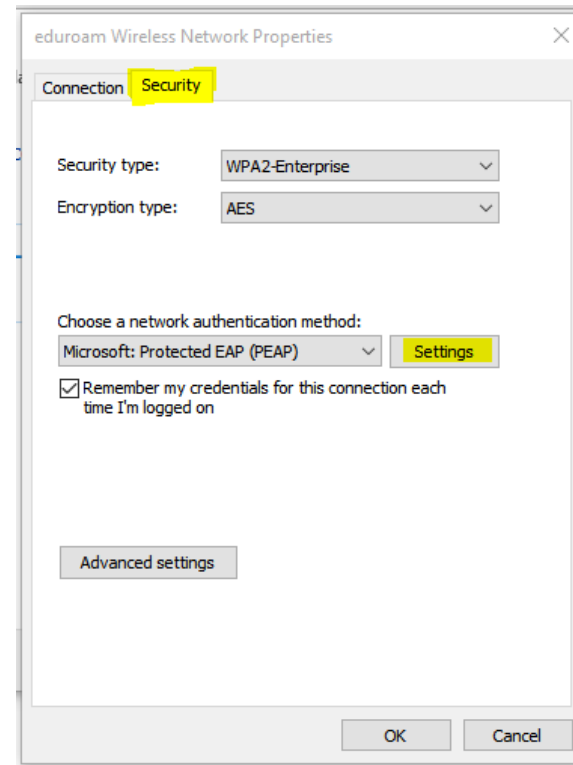
5. Click on **Change connection settings**.



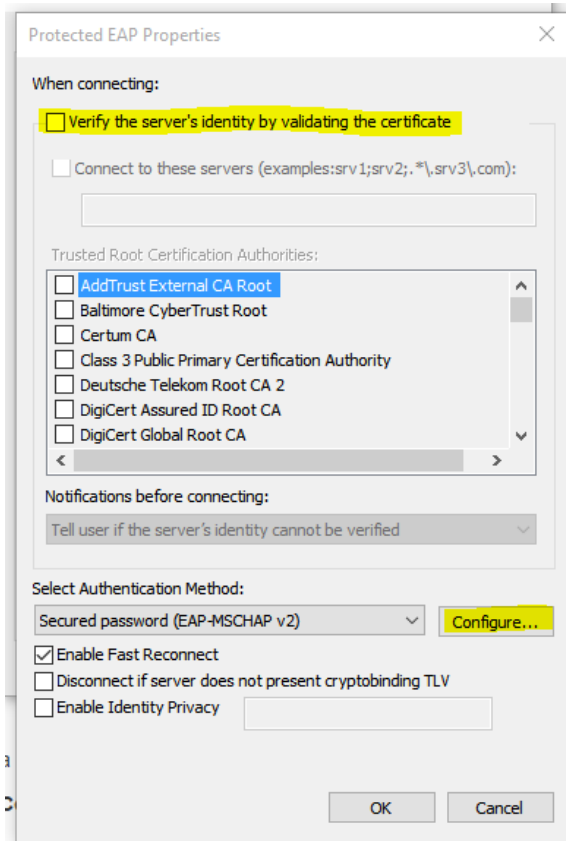
6. Open the **Security** tab. make sure the **Choose a network authentication method** is set to **Microsoft: Protected EAP (PEAP)** and click **Settings**.



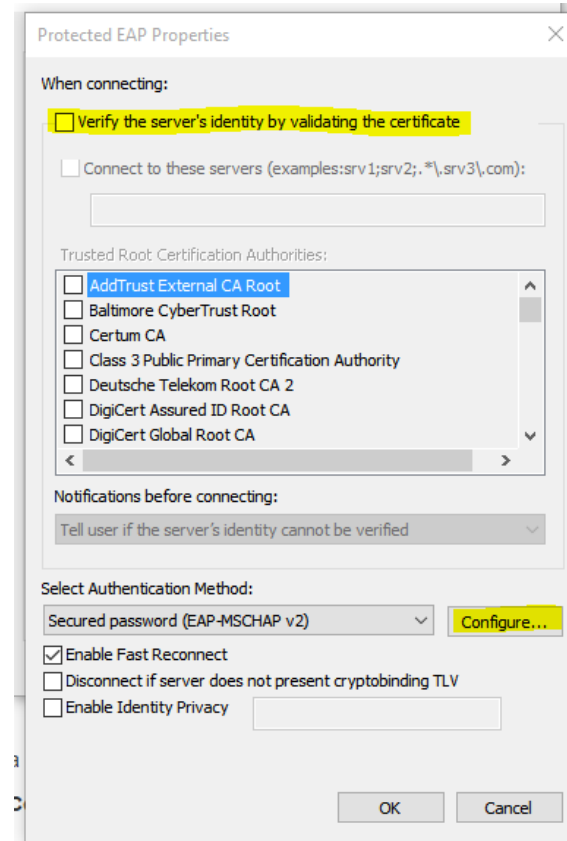
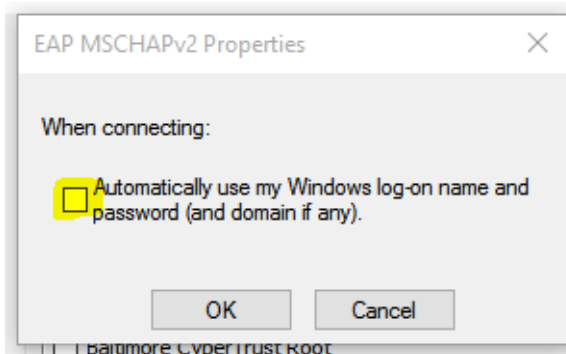
7. Avaneud aknas eemalda linnuke valikult **Verify server's identity by validating the certificate**. Seejärel vajuta nupule **Configure**.



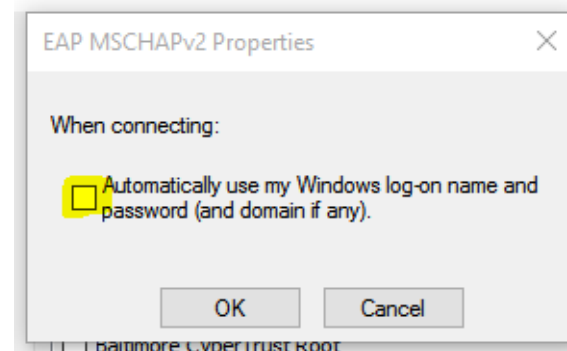
7. Remove the tick from the **Verify server's identity by validating the certificate** checkbox. After that, click the **Configure** button.



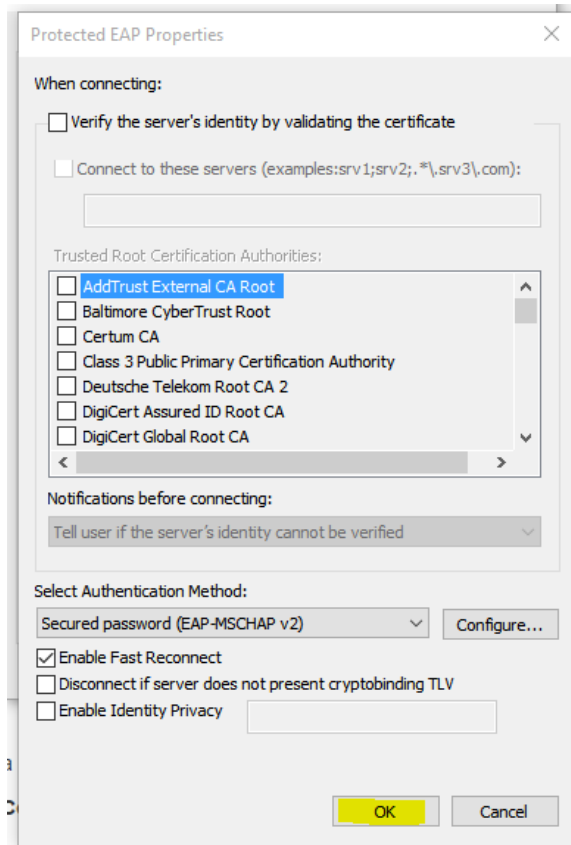
8. Avanenud aknas eemalda linnuke ja vajuta **OK**.



8. Remove the tick from the checkbox that says **Automatically use my Windows log-on name and password** and click **OK**.

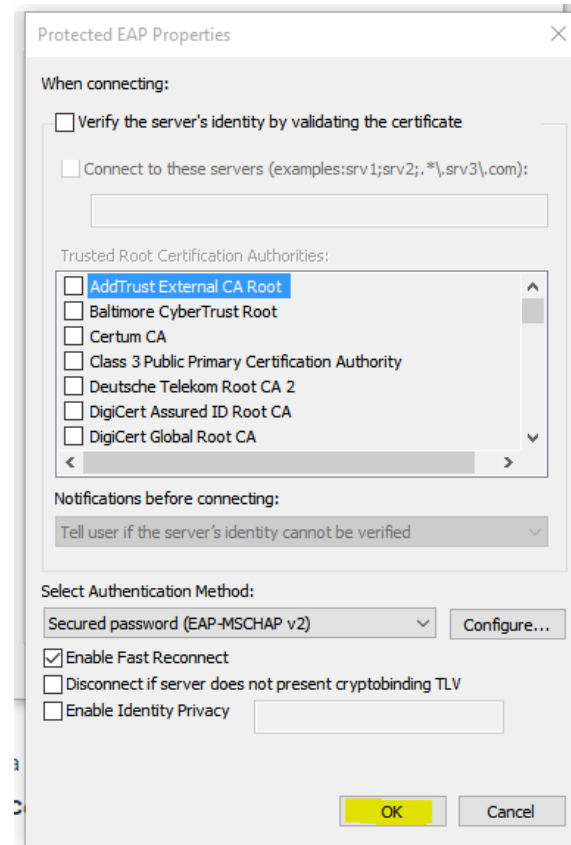


9. Vajuta **OK**.

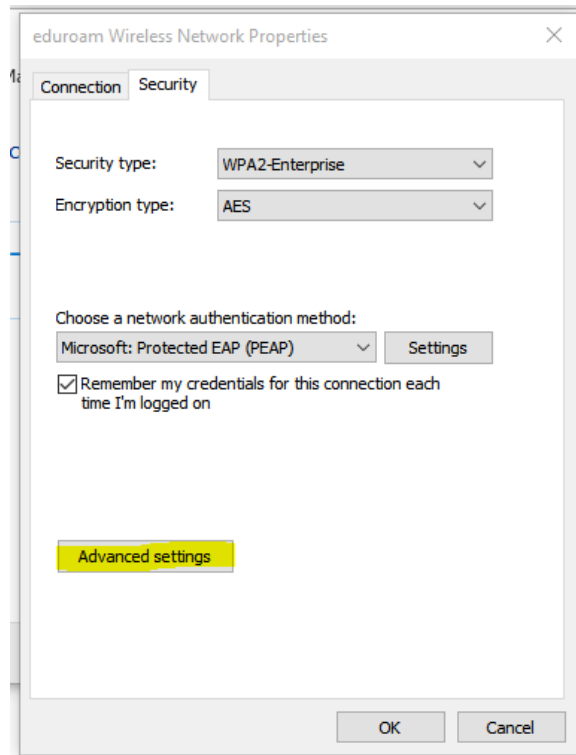


10. Vajuta nupule **Advanced settings**.

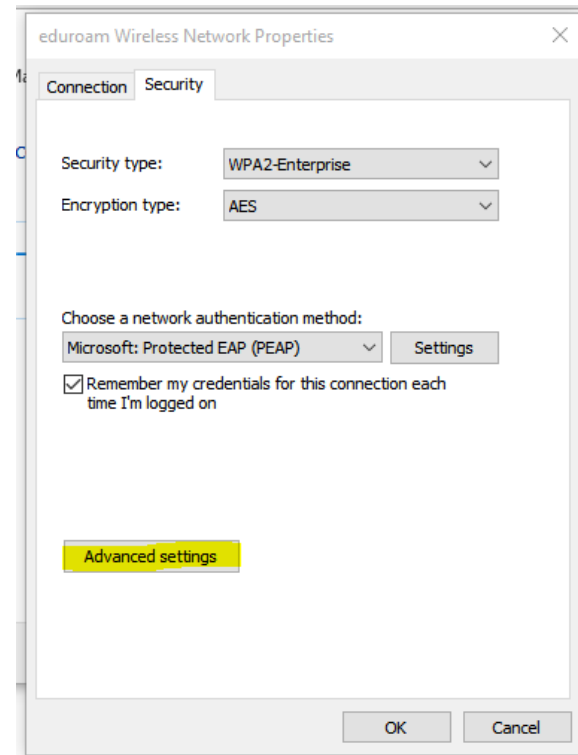
9. Click **OK**.



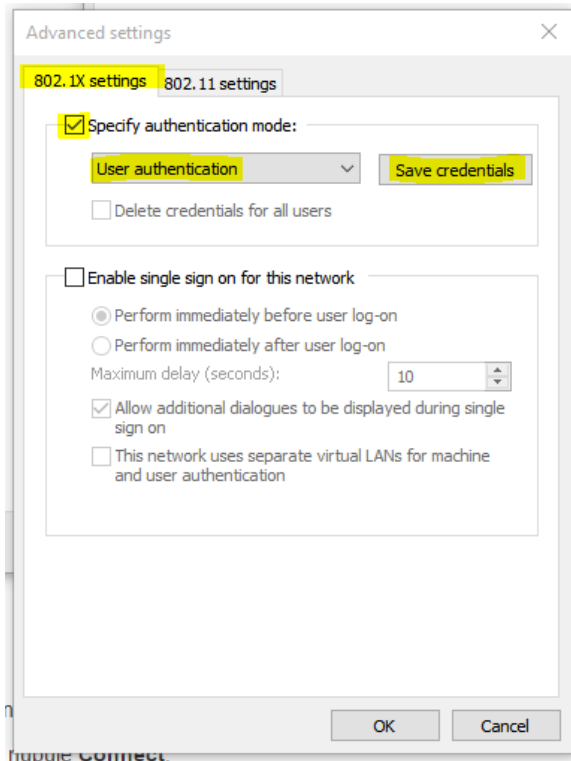
10. Click on **Advanced settings**.



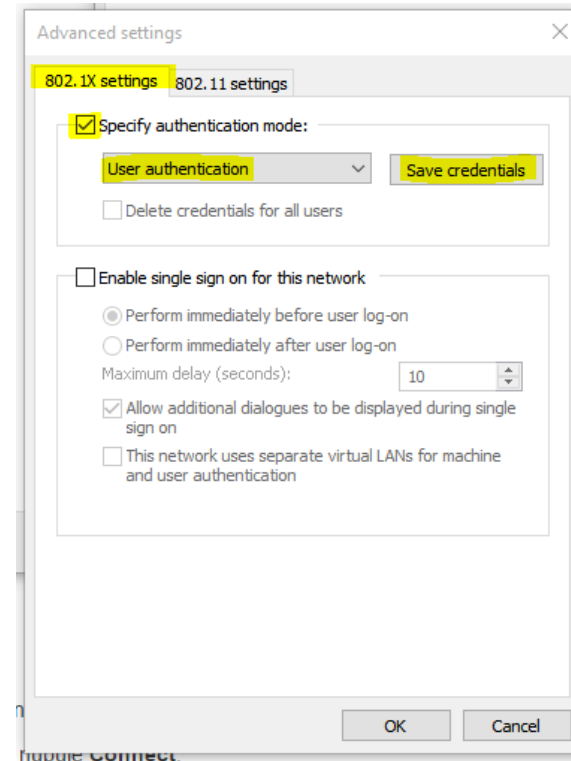
11. Pane linnuke lahtirisse **Specify authentication mode** ja vali rippmenüüst **User authentication**. Seejärel vajuta nupule **Save Credentials**.



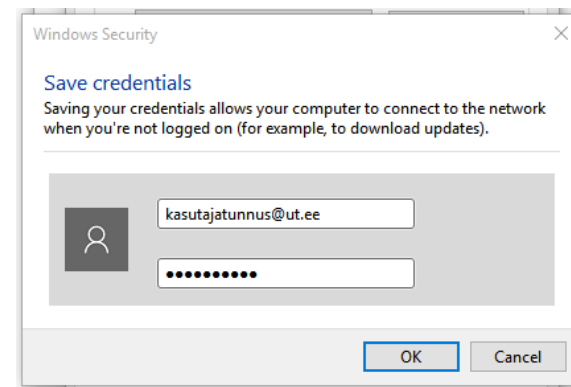
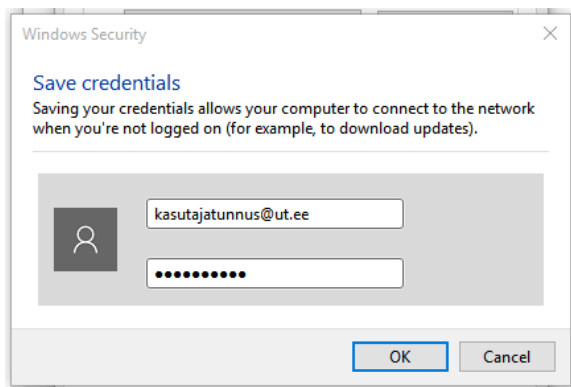
11. Tick the checkbox that says **Specify authentication mode** and choose **User authentication** from the drop-down menu. After that, click on **Save Credentials**.



12. Peale **Save Credentials** nupule vajutamist, sisesta avanenud aknas oma kasutajatunnus kujul **kasutajatunnus@ut.ee** ja parool vastavatesse lahtritesse ja vajuta **OK**.



12. After clicking **Save Credentials** enter your username in the form **username@ut.ee** and your password in the designated fields. Click **OK**.



13. Sulge kõik aknad vajutades nuppudele **OK** ja **Close**. Arvuti peaks end hetke pärast võrguga ära ühendama.

13. Close all the open windows by clicking **OK** and **Close**. In a moment your computer will establish the connection, if all of the settings are correct.