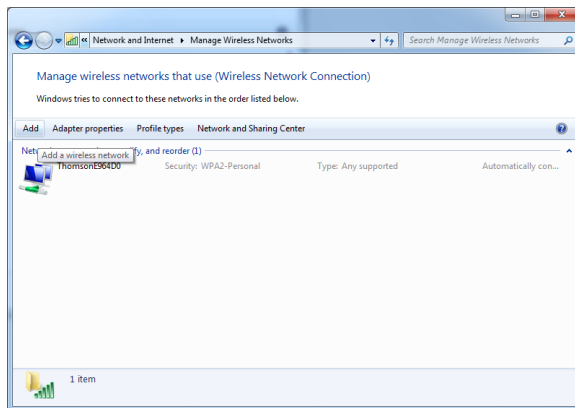


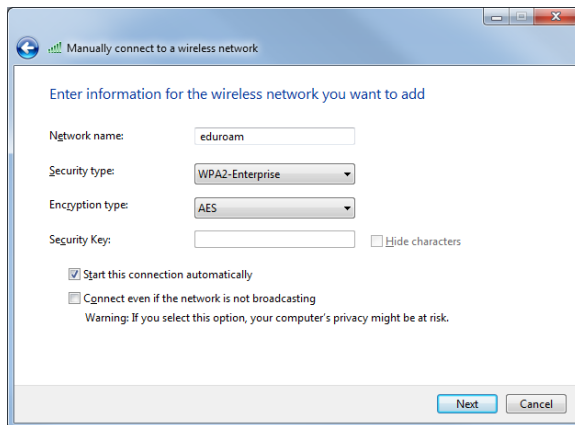
# Windows 7

## Ühendumine eduroam'i (Windows 7)

1. Avage arvuti **Start** menüüst **Control Panel >> Network and Internet >> View network status and tasks**
2. Valige vasakult **Manage wireless networks**.
3. Avanenud aknas valige **Add**.



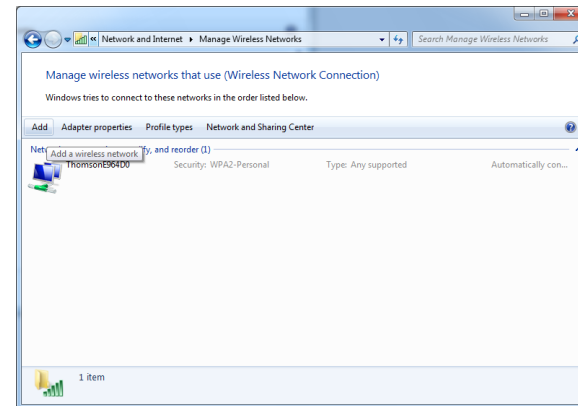
4. Valige **Manually create a network profile**
5. Täitke väljad nagu näidatud joonisel ja vajutage **Next**.



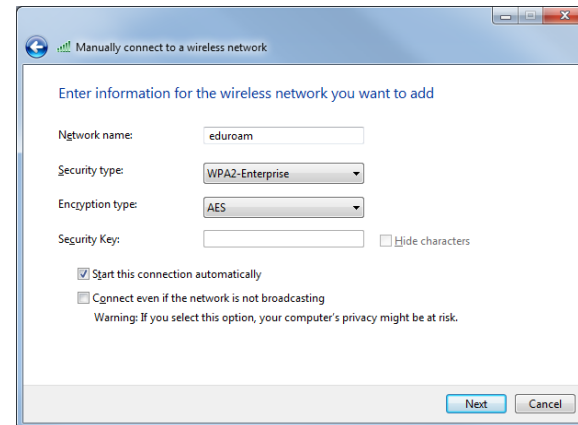
6. Seejärel vajutage **Change connection settings**.

## Connecting to eduroam (Windows 7)

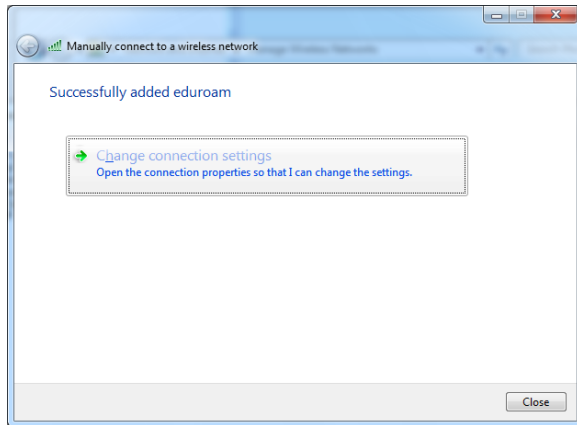
1. Open your the **Control Panel** from your **Start menu**. In the **Control Panel**, go to **Network and Internet** and open **View network status and tasks**
2. Click on **Manage wireless networks** in the menu on the left.
3. Click **Add** in the window that just opened.



4. Choose to **Manually create a network profile**.
5. Fill in the fields like on the picture below and click **Next**.

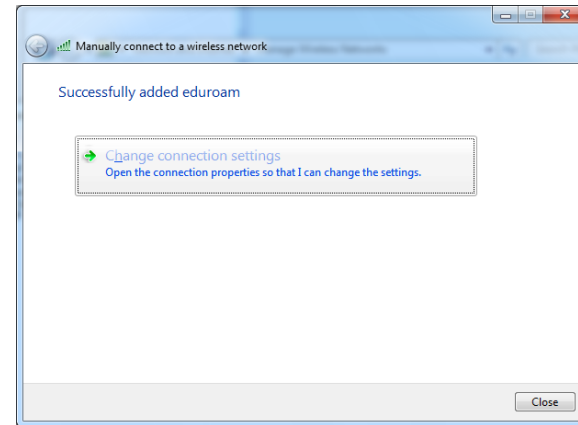


6. Now click on **Change connection settings**.



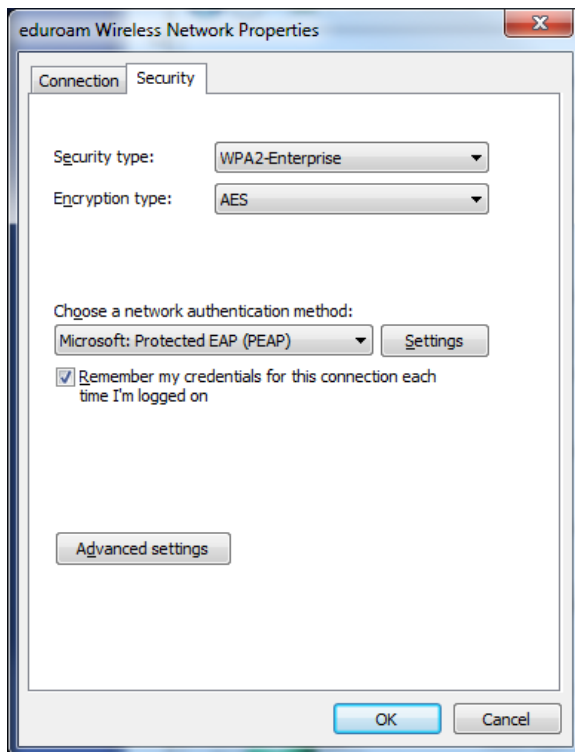
7. Avanedud aknas valige sakk **Security**.

8. Vajutage akna keskel oleva rippmenüü järel nupule **Settings**, et avada **Protected EAP Properties** aken.

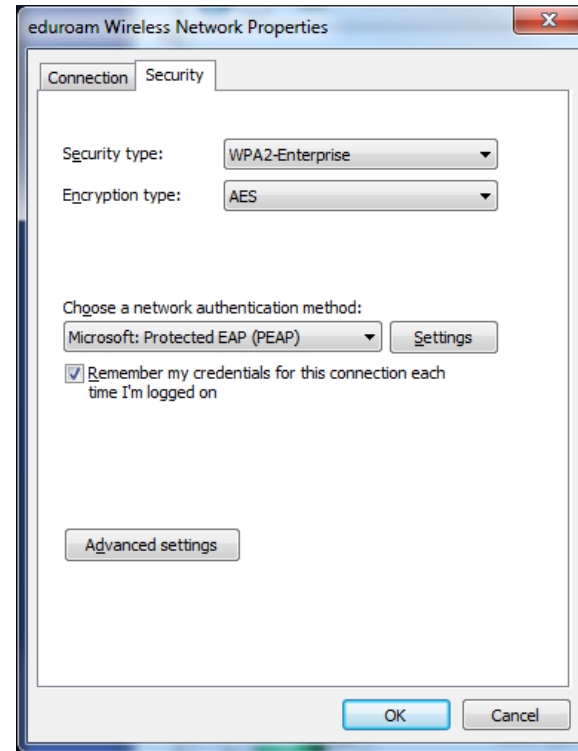
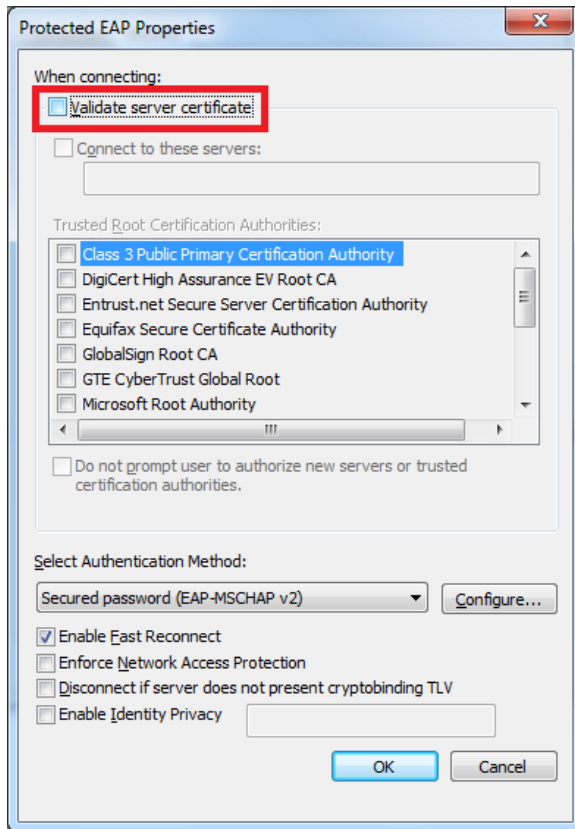


7. In the window, that just opened, click on the **Security** tab.

8. Click on the **Settings** button behind the drop-down menu in the middle of the window. This will open the **Protected EAP Properties** window.

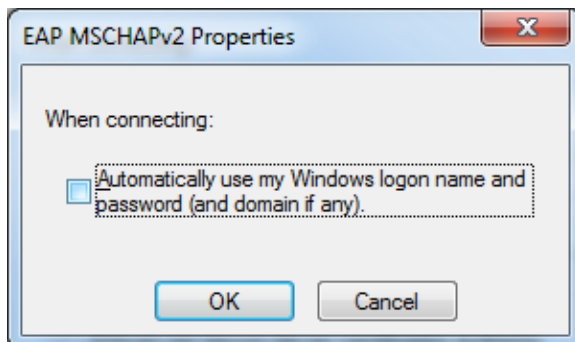


9. Eemaldage linnuke kastist **Validate server certificate** ja vajutage **EAP-MSCHAP v2 Configure**.



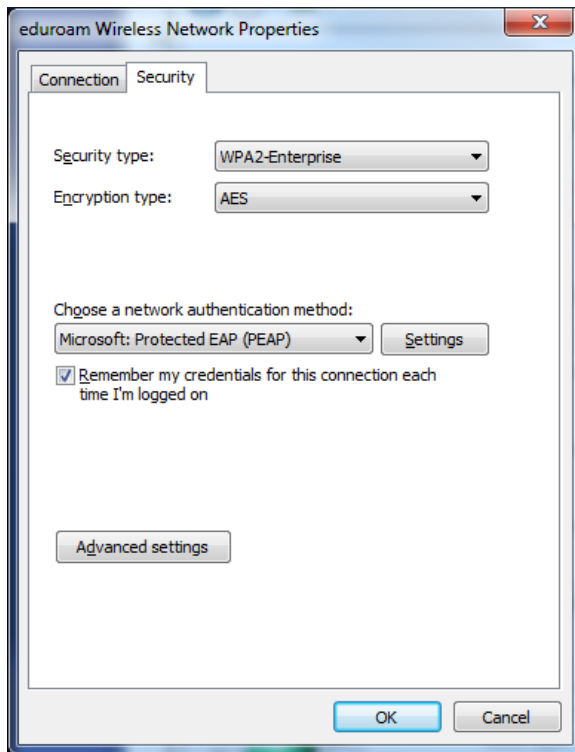
9. Uncheck the **Validate server certificate** option and click on the **Configure** button at the bottom of the window.

10. Eemaldage linnuke kastist nagu on näidatud järgmisel pildil ja vajutage **OK**.

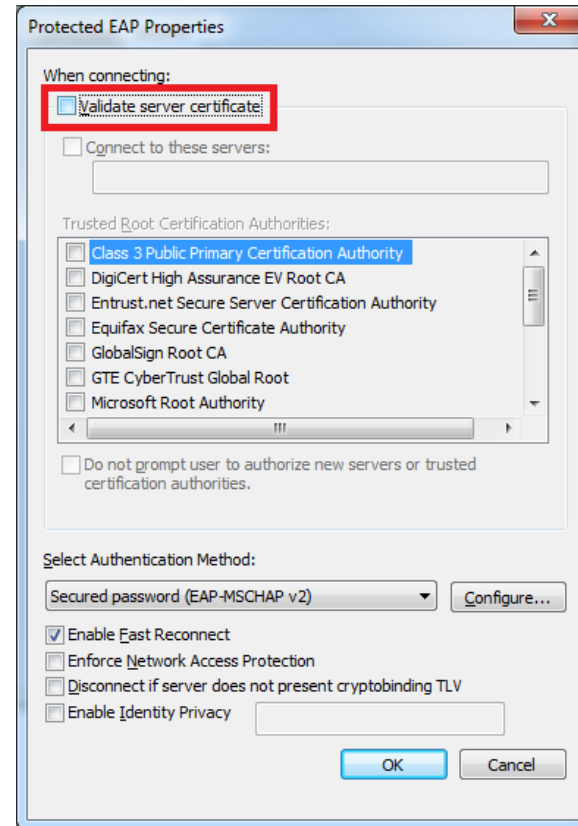


11. Sulgege **Protected EAP Properties** aken vajutades **OK**.

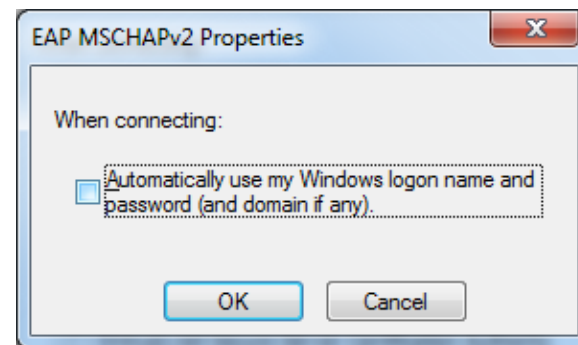
12. Aknas **Eduroam Wireless Network Properties** (8. punktis näidatud pilt) sakis **Security**, vajutage nupule **Advanced Settings**.



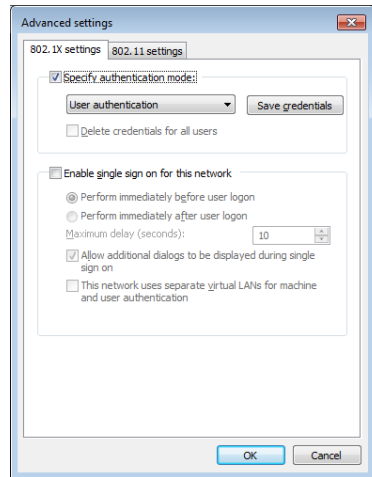
13. **802.1x** sakis valige autentimise viisiks "User authentication" nagu näidatud järgmisel pildil.



10. Uncheck the box so the settings match the image below and click **OK**.



11. Close the **Protected EAP Properties** window by clicking **OK**.

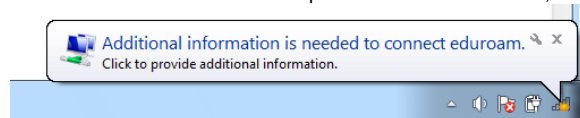


14. Soovi korral võite siin salvestada ka oma kasutajatunnuse ja parooli vajutades nuppu **Save credentials**. Avanenud aknasse sisestage oma ülikooli kasutajatunnus kujul [kasutajatunnus@ut.ee](mailto:kasutajatunnus@ut.ee), ning parool tavapäraselt.

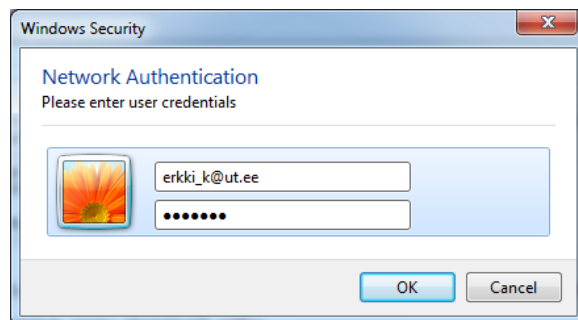
15. Sulgege sätete aknad vajutades **OK**.

**Sellega on eduroam levi seadistatud!**

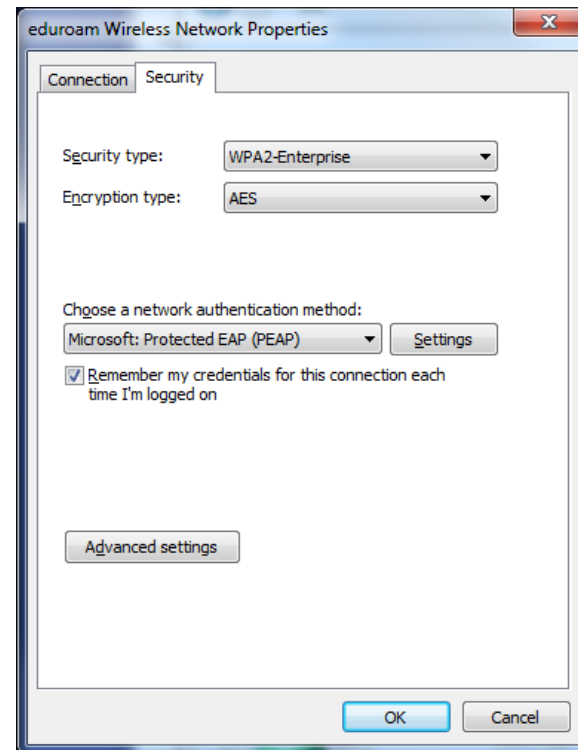
16. Juhul kui te eelnevalt oma kasutajatunnust ja parooli ei salvestanud, ilmub esmakordselt **eduroam** levis se sattumisel teie arvuti alumisse paremasse nurka infoaken, millel peate klikkama.



17. Avanenud autentimisaknasse kirjutage oma kasutajatunnus kujul [kasutajanimi@ut.ee](mailto:kasutajanimi@ut.ee) ja parool tavapäraselt. Vaata järgmist pilti.

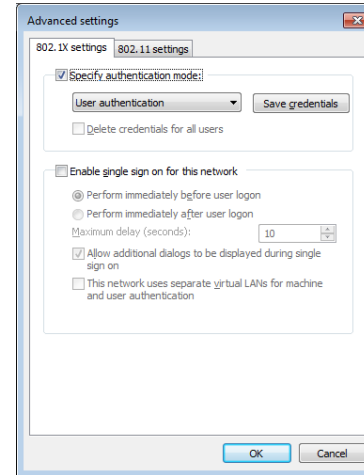


12. In the **Security** tab of the **Eduroam Wireless Network Properties** window, click on **Advanced settings**



13. In the **802.1x** tab, set the authentication mode to **User authentication**, as shown on the image below.

Edaspidi ühendub teie arvuti **eduroam** leviga automaatselt.

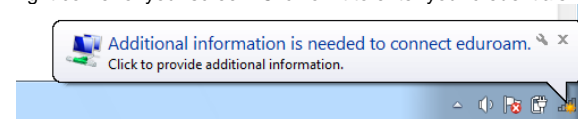


14. In this window, you can save your logon credentials for the network by clicking **Save credentials**. In the window that opened, enter your username in the form **username@ut.ee** and the password associated with your account.

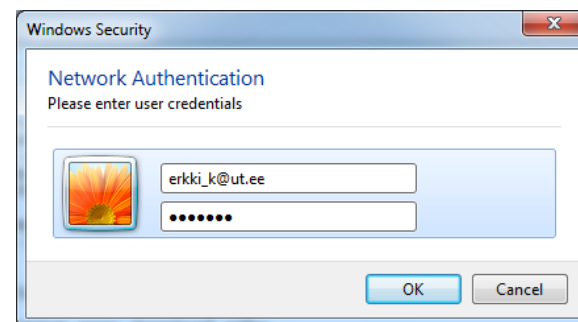
15. Close all the settings windows by clicking **OK**.

**You have now configured eduroam!**

16. If you didn't save your logon credentials during the setup process, a pop-up will appear in the bottom right corner of your screen. Click on it to enter your credentials.



17. In the window that opened, enter your username in the form **username@ut.ee** and the password associated with your account. See the next image.



Your computer will now automatically connect to **eduroam**.